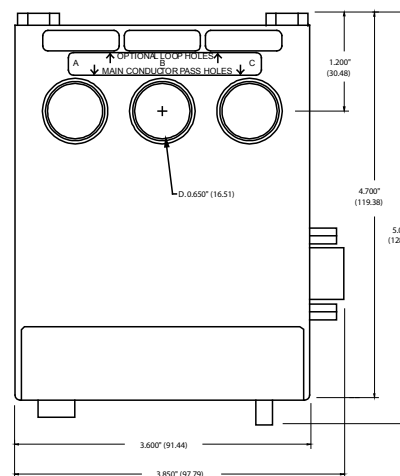
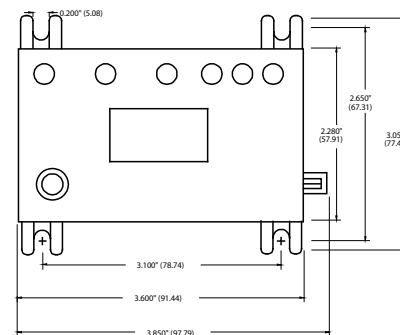


Specifications

Functional Specifications	
Programmable Operating Points LV-Low Voltage Threshold HV-High Voltage Threshold VUB-Voltage Unbalance Threshold MULT-# of Conductors or CT Ratio (xxx:5) OC-Overcurrent Threshold PWS- Power Scale LP - Low Power CUB- Current Unbalance Threshold TC- Overcurrent Trip Class RD1- Rapid Cycle Timer RD2- Restart Delay After All Faults Except Undercurrent (motor cool-down timer) RD3- Restart Delay After Undercurrent (dry-well recovery timer) #RU- Number of Restarts After Undercurrent ADDR- R5485 Address COM- Communication setting #RF-Number of Restarts After All Faults Except Undercurrent UC1D- Undercurrent Trip Delay ** GF- Ground Fault Current Threshold	170-524V 172-528V 2-25% or 999 (disabled) 1-2, 25, 50, 75, 100, 150, 200, 300, 400, 500, 600, 700, 800 (2-10A) + MULT of 80-140% of CT Primary 1 = 0.01-0.99kW 5 = 0.01-1.32hp 2 = 1.00-9.95kW 6 = 1.34-13.3hp 3 = 10.0-99.5kW 7 = 13.4-133hp 4 = 100-650kW 8 = 134-871hp 0.01-650kW or 0.01-871hp or 0 (off); LP setting is dependent on PWS setting. PWS setpoint must be programmed prior to LP 2-50% or 999 (disable) 2-60, J2-J60, L00-L60, oFF 0-999 seconds 2-500 minutes 2-500 minutes, A (Automatic) 0, 1, 2, 3, 4, A (Automatic) A01-A99 C00-C07 0, 1, oc1, 2, oc2, 3, oc3, 4, oc4, A, ocA (Automatic) 5 seconds (default) (0.3-2A) + MULT or 6-40% of CT Primary or oFF
Input Characteristics	
Supply Voltage 777-LR-KW/HP-P2 Frequency Motor Full Load Amp Range	200-480VAC 50/60Hz 1-2A (looped conductors), 2.1-9.0 (direct), 10-800A (external CTs required)
Output Characteristics	
Output Contact Rating - SPDT (Form C) Pilot Duty General Purpose Expected Life Mechanical Electrical	480VA@240VAC, B300 10A@240VAC 1 x 10 ⁶ operations 1 x 10 ⁵ operations at rated load
General Characteristics	
Operating Temperature Ambient Operating Ambient Storage Accuracy Voltage Current Timing Power Repeatability Voltage Current Maximum Input Power Pollution Degree Class of Protection Relative Humidity Terminal Torque Standards Passed Electrostatic Discharge (ESD) Radio Frequency Immunity (RFI), Conducted Radio Frequency Immunity (RFI), Radiated Fast Transient Burst Short Circuit Surge IEC ANSI/IEEE Hi-potential Test Vibration Shock Safety Marks UL CE Max Conductor Size through 777-LR-KW/HP-P2 Dimensions Weight Mounting Method	-20° to 70° C (-4° to 158° F) -40° to 80° C (-40° to 176° F) ± 1% ± 3% (<100A direct) ± 15% 5% ± 1 second ± 0.5% of nominal voltage ± 1% (<100A direct) 10 W 3 IP20, NEMA 1 10-95%, non-condensing per IEC 68-2-3 7 in.-lbs. IEC 61000-4-2, Level 3, 6kV contact, 8kV air IEC 61000-4-6, Level 3 10V IEC 61000-4-3, Level 3 10 V/m IEC 61000-4-4, Level 3, 3.5 kV input power 61000-4-5 Level 3, 2kV line-to-line; Level 4, 4kV line-to-ground C62.41 Surge and Ring Wave Compliance to a level of 6kV line-to-line Meets UL508 (2 x rated V + 1000V for 1 minute) IEC 68-2-6, 10-55Hz, 1mm peak-to-peak, 2 hours, 3 axis IEC 68-2-27, 30g, 3 axis, 11ms duration, half-sine pulse UL508, UL1053 IEC 60947-1, IEC 60947-5-1 0.65" with insulation 3.1" H x 3.6" W x 5.1" D 1.2 lbs. Surface mount (4 - #8 screws) or DIN Rail Mount

** network adjustable only

Enclosure Dimensions



How to order:

Part Number: 777-LR-KW/HP-P2



www.SymCom.com

...your electronic control & protection specialists

(605) 348.5580 / (800) 843.8848 / Fax (605) 348.5685
 customerservice@symcom.com / technicalsupport@symcom.com